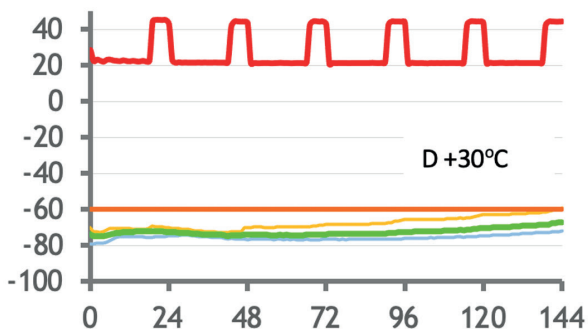


								
20' container Fits 22	40' container Fits 60	TCV Fits 60	Articulated Lorry Fits 66	Wide / Narrow bodied Fits 48 / 23	Accepts Sub Pallet	System Tare 175kg*	Volumetric 168kg	Int. Payload 297L*

Features & Benefits

- 120 hour product protection for <-60°C (<-76°F) (deep frozen) using dry ice
- Fully reusable solution
- Providing significant environmental advantages over disposable and semi-reusable systems
- Integral datalogger providing full audit trail and real-time internal and external temperature records
- Compatible with wide and narrow bodied aircraft
- Sub-pallet-sized payloads
- No human intervention throughout transit required



* figures based upon pack out system 143 inclusive of dry ice and packaging